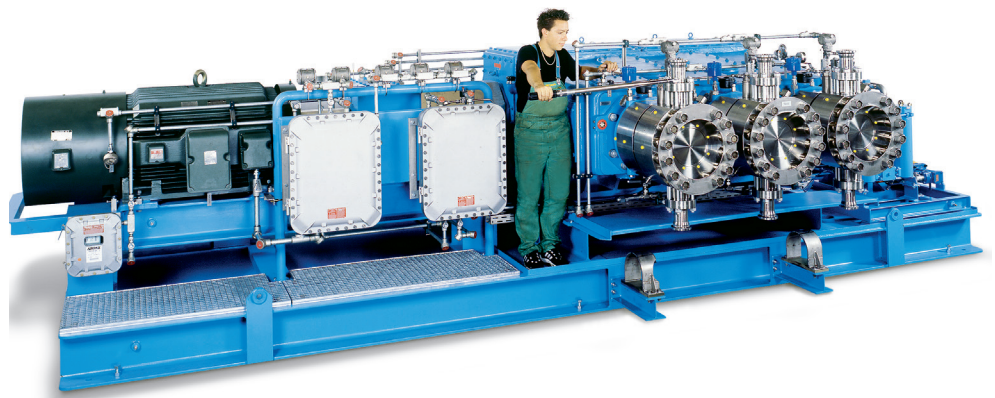


## Process diaphragm pumps for highest environmental demands



LEWA process-diaphragm pump G3U for H<sub>2</sub>S/CO<sub>2</sub>, 230 bar, 24 m<sup>3</sup>/h

Because of the permanently increasing demands on the protection of the environment and due to their special features process diaphragm pumps are more and more used in the process technology. They are specially destined for metering, conveying and injection of

- toxic
- inflammable
- non-lubricating
- containing solids
- expensive or
- critical

fluids.

As a result of the reduction of the sulphur content to lower ppm values, for example, large quantities of H<sub>2</sub>S and CO<sub>2</sub> are produced during refining processes, these products must be injected. This fluid makes extreme demands on the pump systems, as it is highly toxic and absolutely non-lubricating. Moreover it contains solids and has a high vapour pressure. Commonly used pump types such as plunger pumps or centrifugal pumps cannot not be used economically. With modern process diaphragm pumps these conveying tasks can be safely solved with powers of 1000 kW and far more than 1000 kW with two pumps coupled.

The most important advantages of the LEWA process metering pumps are

- hermetical tightness
- precise conveying due to pressure stiff pump characteristics
- flows up to 200 m<sup>3</sup>/h have been handled so far
- pressures up to 1200 bar (metal diaphragm) resp. 800 bar (PTFE diaphragm)
- high operational safety and availability
- long diaphragm service life
- low maintenance costs
- safe dry operation
- diaphragm monitoring system as a standard
- online and offline condition monitoring systems
- low life cycle costs

A MEMBER OF   
**LEWA**  
pumps + systems

Creating Fluid Solutions

LEWA GmbH  
Ulmer Strasse 10  
71229 Leonberg  
Telephone +49 7152 14-0  
Telefax +49 7152 14-1303  
E-mail [lewa@lewa.de](mailto:lewa@lewa.de)  
Internet [www.lewa.de](http://www.lewa.de)