

Modern LEWA triplex process diaphragm pumps for the metering of caprolactam

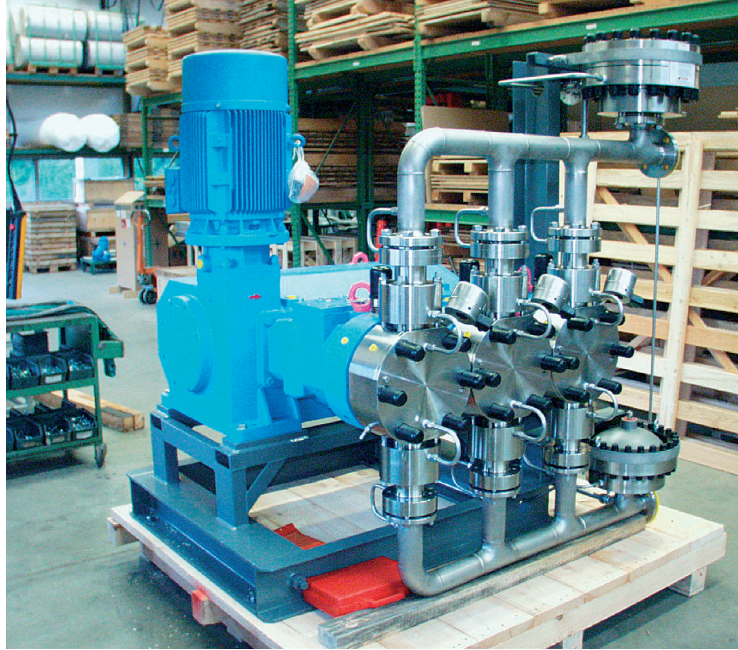


Fig.1: LEWA triplex process diaphragm pump G35 for caprolactam melt

Caprolactam forms the basis for the production of Polyamide 6. With its versatile properties, it is the ideal starting point for a diverse number of products. Some of the products belonging to this group are e.g.:

- Residential and commercial carpets
- Clothing, nylon stockings, swimsuits and special suits
- Technical products such as fishing nets, brush bristles, wires, and ropes
- Molded plastic parts for tools and other equipment
- Foils for packaging film



Fig. 2: Nylon stockings as high quality final of the basis of caprolactam



Fig. 3: Engineering plastics, form parts and wires

Trouble free melt conveying with LEWA process diaphragm pumps

A LEWA process diaphragm pump convey caprolactam melt e.g. at 100°C, 11m³/h at a pressure of 36 bar, variable via frequency inverter. The pump can be equipped with overall heating jacket, built according to customer's specification and especially designed for continuous operation in production.

Modern LEWA triplex process diaphragm pumps for the metering of caprolactam offer the valuable customer benefits:

- Excellent service life compared to the conventional screw pumps
- High efficiency rate compared to centrifugal pump resulting in lower investment and operating costs
- Safe and gentle operation with caprolactam melt
- Proven and complete system solution from one source

The excellent product properties of the LEWA triplex process diaphragm pumps, decades of experience and the extensive expertise of the technical global market leader make LEWA a reliable partner in projects for the production of Polyamide 6.



LEWA GmbH
Ulmer Straße 10
71229 Leonberg
Telephone +49 7152 14-0
Telefax +49 7152 14-1303
E-mail lewa@lewa.de
Internet www.lewa.de